

December

CMEC NEWSLETTER

Simpson Strong-Tie Event was a Success!



The Building Connections: Simpson Strong-Tie Student Symposium was held on Saturday, October 12th. Over 75 students from Construction Management, Civil Engineering, Architecture, and other majors attended, making this one of our largest symposia. Simpson Strong-Tie employees and CMEC staff guided students through 3 demonstrations, including proper connector installation, anchor systems, and fasteners. Many students noted that the connector strength testing was a highlight due to testing both a properly installed connector and an improperly installed connector.



The guest speaker this year was [Annie Kao, PE](#), Simpson Strong-Tie VP of Strategic Partnerships and Engagement. Annie spoke candidly about her career path and noted that unexpected changes can be times of growth.

This is the 8th year that Simpson Strong-Tie has collaborated with WSU to host the symposium. We are thankful for SST's continued support of VCEA students!

Dear CMEC family,

Wishing you all much deserved rest during this holiday season. Thank you for all that you do!! Merry Christmas and a Joyous New Year! Happy Holidays to all!

Be safe and recharge,

Vik + Julia

Jinwen Zhang is awarded two grants!

Jinwen Zhang received two large grants this semester. One is from the Department of Energy, which started 8/1/24: *Transforming Carbon Fiber Reinforced Polymer Wastes into Recyclable Structural Automotive Components* (\$1.65M). See more [here](#). Dr. Zhang also received a new [USDA](#) grant, which started on 9/14: *Developing Non-isocyanate Polyurethane Foams and Elastomers with Inherent Recyclability from Renewable Feedstocks* (\$591K).

New earthquake-resistant timber shelter tested for seismic safety

The U.S. Army Engineer Research and Development Center (ERDC) Construction Engineering Research Laboratory (CERL), in collaboration with the Composite Recycling Technology Center (CRTC) and Washington State University (WSU), tested an innovative Cross-Laminated Timber (CLT) shelter made using thermally modified Coastal Western Hemlock. Learn more about this CMEC project and news story [here](#).

Julia Day co-leads International Energy Agency (IEA) research network to plan for extreme events



Planning meeting at Northeastern in Boston in April 2024



First Expert's Meeting in Sevilla, Spain in November 2024



Julia Day, associate professor in the School of Design and Construction and associate director of CMEC, is co-leading an international research network that is studying building design, operation, and energy use to ensure that buildings are resilient, energy efficient, and comfortable as climate change intensifies.

The five-year research network that Day is leading is through the International Energy Agency (IEA), an autonomous intergovernmental organization that provides policy recommendations and analysis on a wide variety of energy issues. The agency includes 31 member countries worldwide and 13 associated countries.

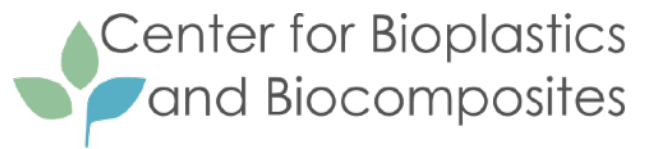
The IEA research network will focus on human-centered design, exploring how people interact with buildings and developing design strategies that enhance human wellbeing in both normal and extreme conditions. Researchers will investigate how people adopt and adapt to new energy technologies and behaviors in their buildings.

If you are interested in getting involved, see more here: <https://annex95.iea-ebc.org/> or read more about the story [here](#). The next meeting is @ WSU Spokane May 14-16, 2025. We are still recruiting participants!



CMEC hosts CB2 Fall Meeting

The Fall meeting for the I/UCRC Center for Bioplastics and Biocomposites (CB2) was held October 12-14th on the WSU Pullman Campus. During the event, attendees were able to tour CMEC's RTP labs.



In total, 22 industry advisory board members and 38 faculty and staff from the four member universities (Iowa State Univ., North Dakota State Univ., University of Georgia, and WSU) attended the hybrid event. Twenty companies from the CB2 Industry Advisory Board were in attendance at the Fall meeting.

- Industrial advisory board members (IAB): 13 in person and 9 virtually
- University members: 27 in person and 11 virtually

CB2 is part of the NSF Industry-University Cooperative Research Centers (I/UCRC) program, which accelerates the impact of basic research through close relationships between industry innovators, world-class academic teams, and government leaders. For 2025, 11 projects were funded. CMEC's very own Hui Li has a funded project for Cellulose-reinforced polyamide composites. To see full list of funded projects, see [here](#).



Farewell to visiting scholar Dr. Kim Pickering! We are delighted you chose to spend your sabbatical with us at WSU!



Jinwen Zhang will be on Sabbatical at University of Auckland next semester.



CMEC Postdoctoral Research Associate Wangcheng Liu was selected to receive additional fellowship funds from the Washington Research Foundation: 2024 David Galas Distinguished Fellow Award!

CMEC ANNOUNCEMENTS & CONGRATULATIONS!

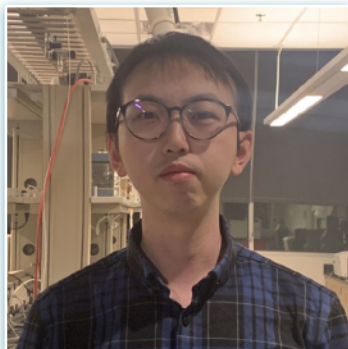
STUDENT CORNER



Meet Riley Grievell!

"I earned my BS in Chemistry at Dixie State University (now known as Utah Tech) in St. George, Utah. While earning that degree, I met my wife, Rebecca. We have been married for nearly four years now and have lived in Pullman for just over two years. I enjoy spending my free time with my wife and 6-month-old son Finn, watching Ghibli movies, playing

video and board games, creative writing and being active. My favorite: Food is Hashbrown Casserole, Drink is Orange Juice, Book Series is Dungeon Born, Music Genre is Indie Folk, and Season is Fall. I have greatly enjoyed working in Materials Science and Engineering and am excited to continue my research in Resin Bonding Performance and Viscoelastic Behavior on Medium Density Fiberboard in 2025."



Lin Shao has accepted a new position as Engineer at Nano and Advanced Materials Institute Limited in Hong Kong, China
PI: Jinwen Zhang
2024 PhD in Mechanical and Materials Eng.



Congratulations to CMEC Graduate student, Abiola Adeniran. He and his wife welcomed their son, Zayn Oluwamurewa Adeniran, on 10/03/2024.



Yared Anbesso successfully defended his thesis in November!

MS in Civil Engineering (PIs: Dolan/Bahmani) Yared Anbesso is a master's student in Structural Engineering at Washington State University. He is actively involved in research focused on Light Frame and Mass Timber Shear Walls, which aim to provide affordable and resilient housing solutions.

WASHINGTON STATE UNIVERSITY
CELEBRATES THE CLASS OF



FALL COMMENCEMENT
SATURDAY, DECEMBER 7, 2024



DECEMBER 2024 CMEC GRADUATES

Yared Anbesso - MS in Civil Engineering (PIs: Dolan/Bahmani)

Amos Black - MS in Civil Engineering (PI: Motter)

Matthew Clark - MS in Civil Engineering (PI: Bahmani)

Evan Gonzalez – Cum Laude, BS in Materials Science Engineering (undergrad researcher. PI: Zhang)

Jesus Jimenez Jr., BS in Mechanical Engineering (undergrad researcher, PI Li)



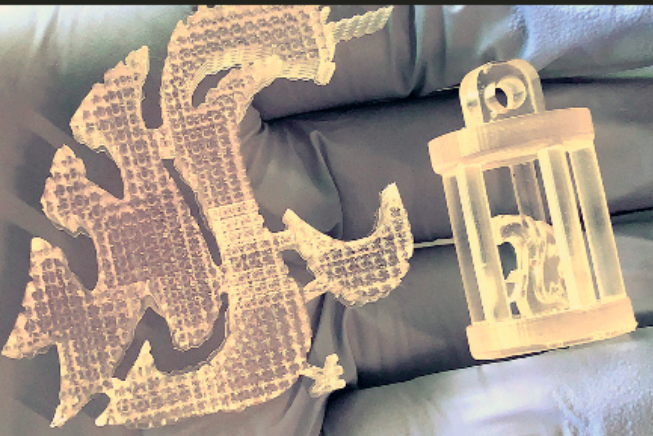
WASHINGTON STATE UNIVERSITY

Composite Materials and Engineering Center

cmec.wsu.edu



+150 Advanced Degrees Earned
*by students under CMEC faculty guidance
in the last 25 years*



“Not only are the facilities geared towards making a real difference, you are surrounded by other students and faculty working towards a better future. I would recommend CMEC to anyone ready to make a difference in the world.”

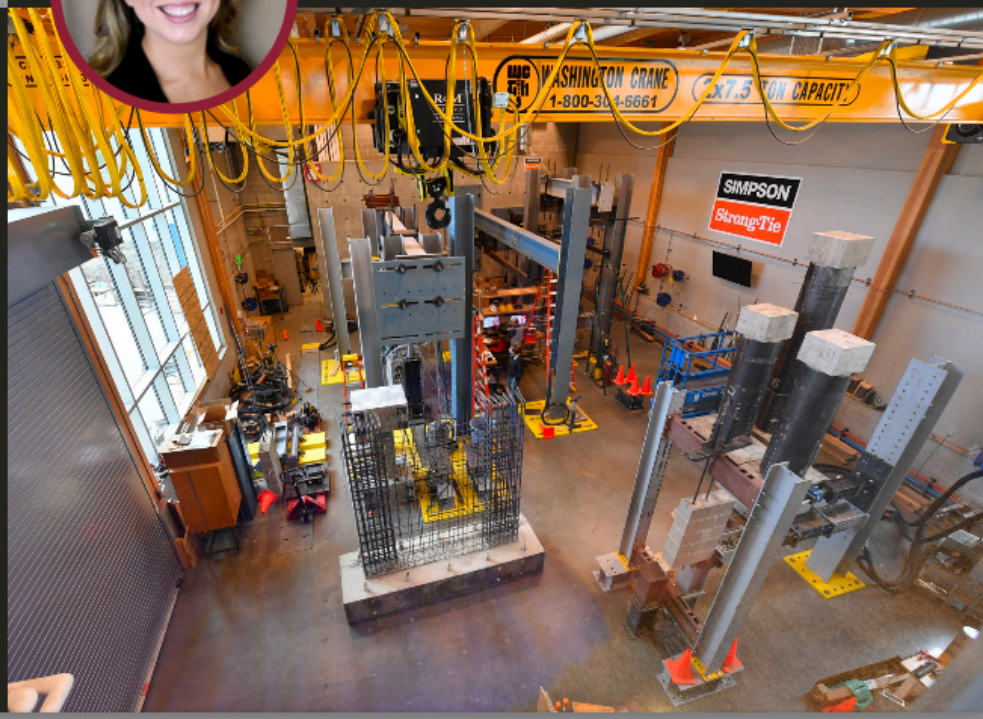
*Kyleigh Rhodes
CMEC M.S. Alumna*



WHAT IS CMEC?

The Composite Materials and Engineering Center (CMEC) is an interdisciplinary research organization focused on developing sustainable materials and manufacturing technologies from recycled and renewable resources.

CMEC also develops innovative structural systems and designs methods to effectively utilize new materials, improve building and construction efficiency, and create healthier buildings for everyone.





LEARN MORE ABOUT PULLMAN, WASHINGTON

Pullman is a vibrant town surrounded by rolling hills and fields of wheat and has been recognized for its safety, diversity, schools, and technology. It is part of the Palouse region of Eastern Washington, which is called "The Tuscany of America."

Scan this code to learn more about Pullman WA!



Find us @ PACCAR
Clean Technology Building

2001 Grimes Way

PO Box 645815
Pullman, WA. 99164

www.cmec.wsu.edu